

Tubolit®
SS (SELF-SEAL)

QUICK SOLUTION FOR BASIC SAVINGS

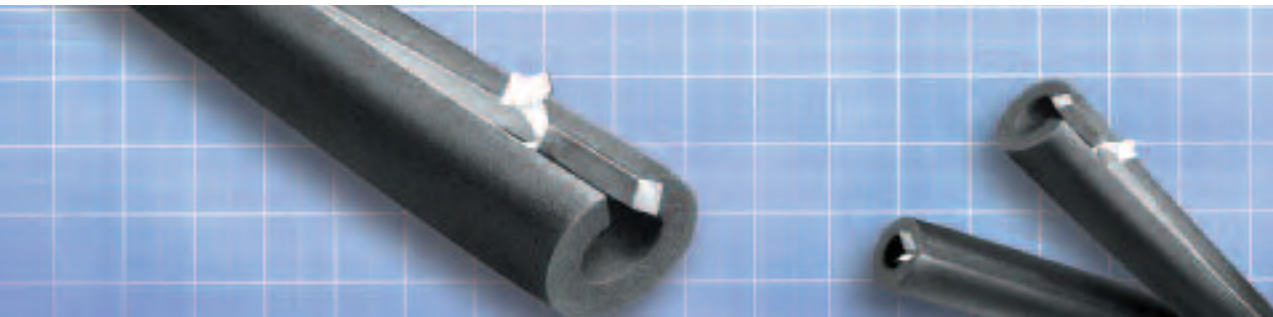
Self-seal for quick installation

Durable polyethylene insulation

Saves energy, reduces noise

Backed by the makers of Armaflex®

Closed-Cell foam



Tubolit[®]

SS (SELF-SEAL)

Description

Tubolit Self-Seal is a 25/50-rated flexible black polyolefin/polyethylene pipe insulation for saving energy while reducing noises. Particularly effective for cost-efficient thermal insulation of domestic heating and plumbing lines. It is available pre-glued on both sides of the seam in the most frequently specified pipe sizes and thicknesses. Tubolit SS is expanded without the use of CFCs, HFCs or HCFCs. It is also formaldehyde free, low VOCs, fiber free, dust free and resists mold and mildew.

Uses

Tubolit SS is recommended for use on lines operating from -200°F (-129°C) to 180°F (82°C). It effectively reduces heat loss on hot-water plumbing and heat gain on cold water plumbing systems.

Installation

Tubolit SS is snapped over new or existing pipework. Installs with simple hand tools and Armaflex 520, 520 Black Adhesive or, where a low V.O.C. is required, Armaflex 520 BLV Adhesive for butt joints. Tubolit must be protected from direct sunlight exposure and weather elements and must be protected when installed outdoors with weather-resistant jacketing or Armaflex[®] WB Finish. The temperature of the air, of the insulation and of the installation surface must be between 40°F (+4°C) and 100°F (38°C) at the time of installation.

Specification Compliance

- MEA 6-02-M
- ASTM C1427 Type I

Physical Data

Average Physical Properties ^①		Test Method	Notes
Thermal conductivity, Btu • in/h • ft ² °F (WmK) 75° (24°C) mean temp	0.25 (0.036)	ASTM C 177 or C 518	① Average values are not to be used for writing material specifications. Contact Armacell for specification ranges.
Water vapor transmission, perm-in [kg/(s•m•Pa)]	0.0 (0.0 x 10 ⁻¹³)	ASTM E 96 Procedure A	
Flame spread and smoke developed index through 1" thicknesses ^②	25/50	ASTM E 84	② Cellular plastics and thermoplastics, such as polyethylene/polyolefin insulation, that may drip, melt, delaminate or draw away from the fire, present unique problems and require careful interpretation of the test results.
Mold growth Fungi resistance Bacterial resistance	UL181 ASTM G21/C1338 ASTM G22	Meets requirements Meets requirements Meets requirements	
Upper use limit ^③	180°F (82°C)		③ For reference only.
Lower use limit ^④	-200°F (-129°C)		④ See Armacell Technical Info-Service #010.
Ozone resistance	GOOD		
Sizes Wall thickness (nominal) Inside diameter, tubular form Length of sections, tubular form	3/8", 1/2", 3/4" and 1" (10, 13, 19, 25mm) 3/8" to 4" IPS (10mm to 114mm ID) 6' (1.83m)		
Density, lbs/ft ³ (Kg/m ³) ^⑤	2 (32)	ASTM D 1622	



ARMACELL LLC
7600 Oakwood Street Extension
Mebane, NC 27302

TEL. 919 304-3846 • FAX 919 304-3847
E-MAIL info.us@armacell.com
INTERNET www.armacell.com

For any updates on this document, please refer to our website.

Armacell provides this information as a technical service. To the extent the information is derived from sources other than Armacell, Armacell is substantially, if not wholly, relying upon the other source(s) to provide accurate information. Information provided as a result of Armacell's own technical analysis and testing is accurate to the extent of our knowledge and ability, as of date of printing, using effective standardized methods and procedures. Each user of these products, or information, should perform their own tests to determine the safety, fitness and suitability of the products, or combination of products, for any foreseeable purposes, applications and uses by the user and by any third party to which the user may convey the products. Since Armacell cannot control the end use of this product, Armacell does not guarantee that the user will obtain the same results as published in this document. The data and information are provided as a technical service and are subject to change without notice.